

Activity and Dissolution Stability of Ir/Ru- based Electrocatalysts Tested in a Model Proton Exchange Membrane Water Electrolyzer

Carolin Sophie Igel^{1,2*}, Maja Milosevic^{1,2}, Dr. Serhiy Cherevko¹

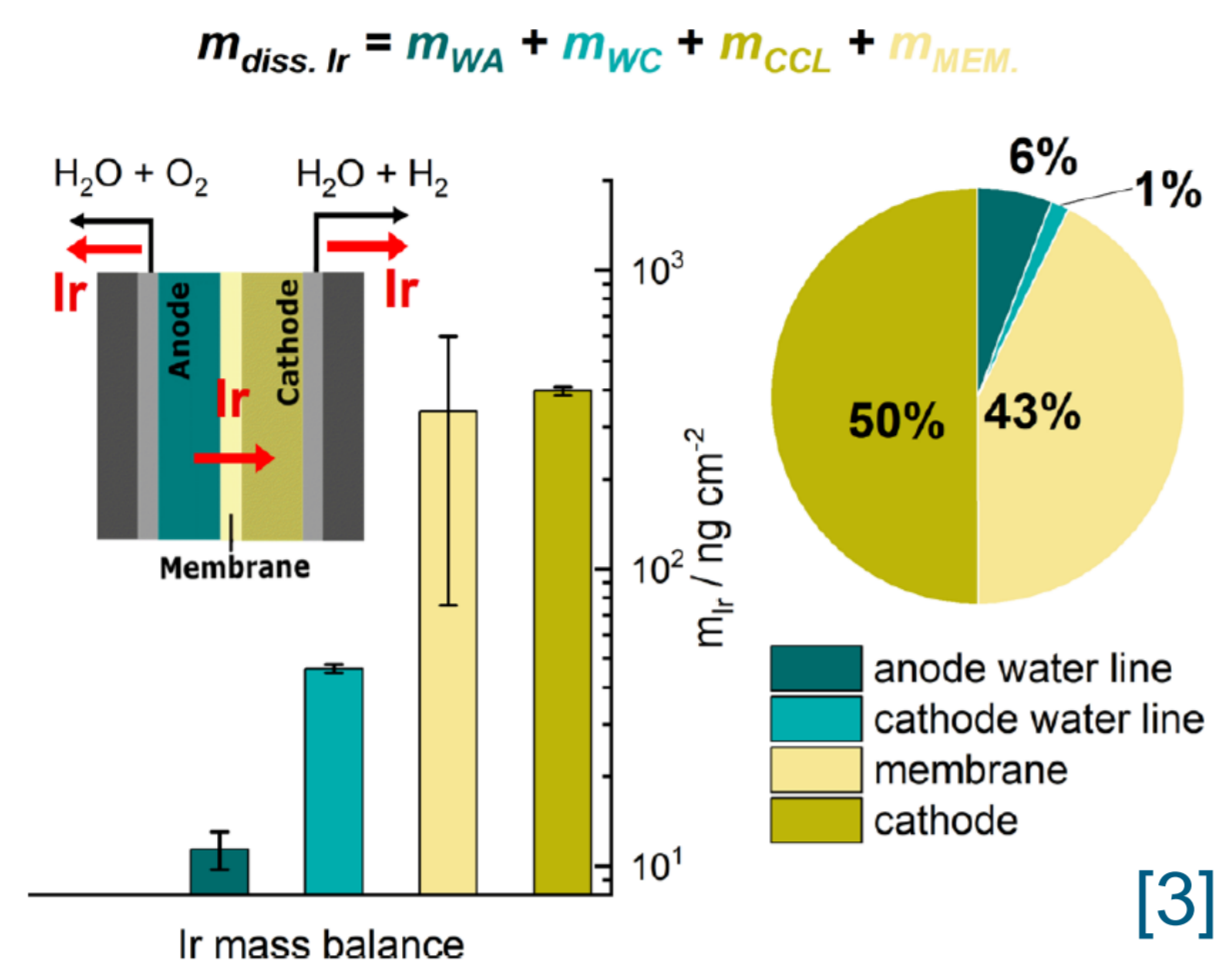
¹ Helmholtz-Institute Erlangen-Nürnberg for Renewable Energy (IEK-11), Forschungszentrum Jülich GmbH, Cauerstr. 1, 91058 Erlangen, Germany

² Department of Chemical and Biological Engineering, Friedrich-Alexander University Erlangen-Nürnberg, Cauerstr. 1, 91058 Erlangen, Germany

Motivation

Increasing demand and rising material prices for iridium (Ir)
→ Replacement of Ir with other PGMs, such as ruthenium (Ru) [1]

Aqueous model systems (AMS): rotating disk electrode (RDE) or scanning flow cell (SFC) extensively studied Ru
→ Ru exhibits higher activity but lower stability than Ir [2]



Activity and dissolution stability of Ir/Ru electrocatalysts tested in a model PEMWE

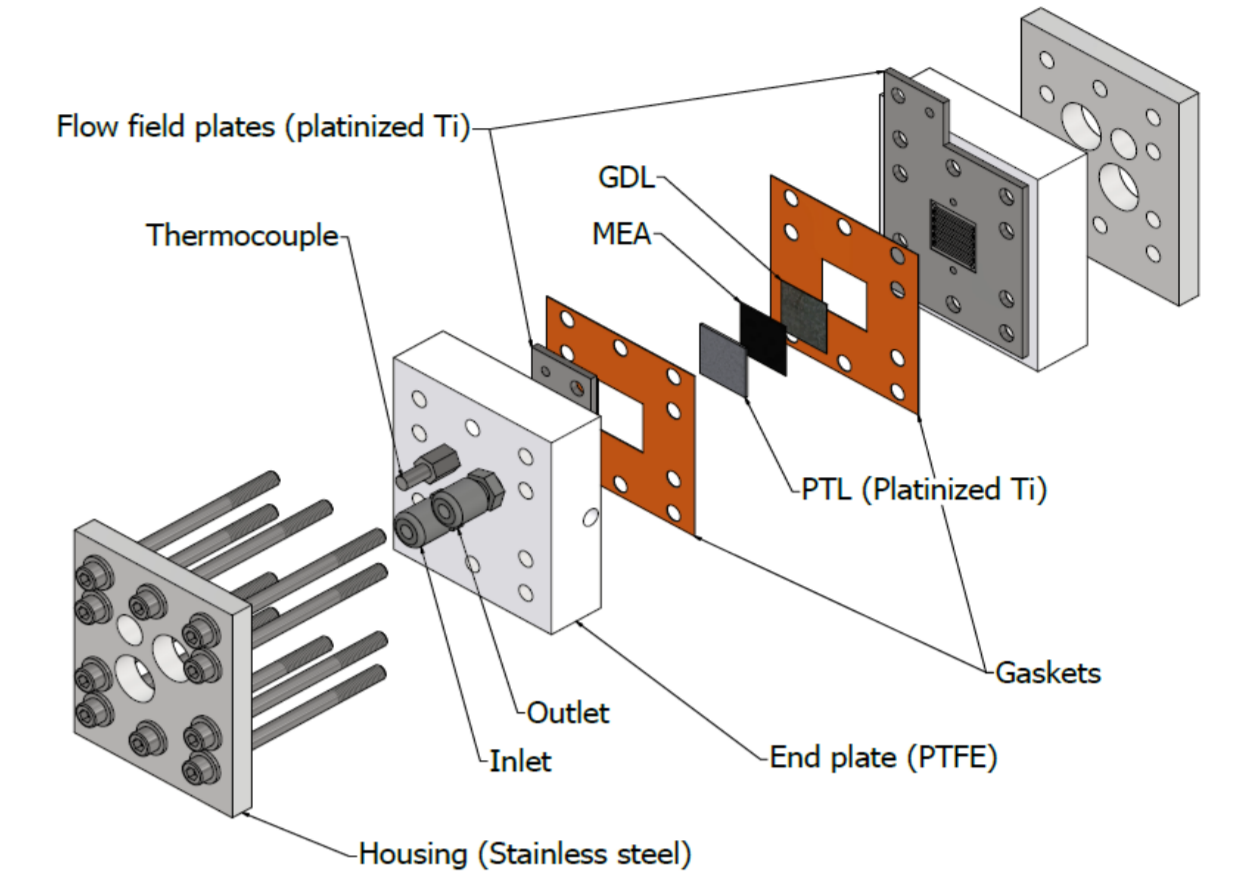
Method

In-house designed **Metal-free PEMWE testing station** [3]

Tracking catalyst dissolution: **water sampling points** within the anode water loop and the cathode outlet line

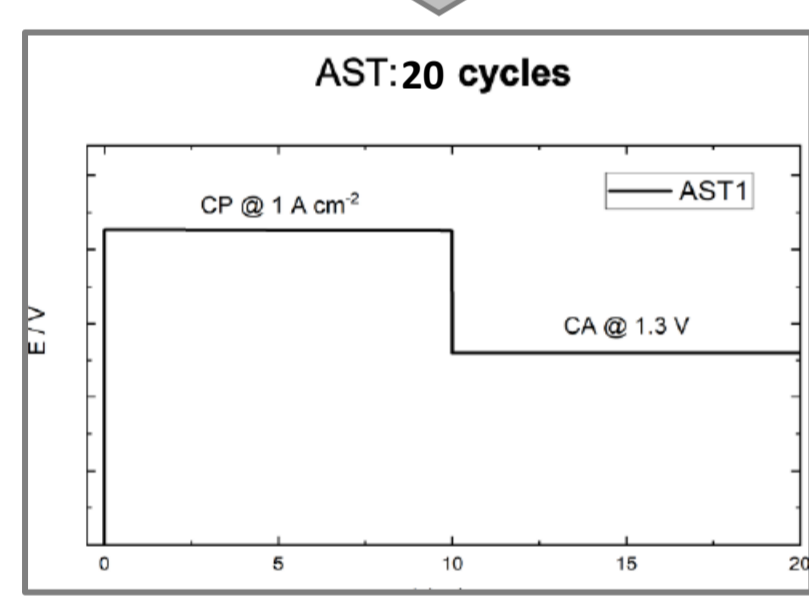
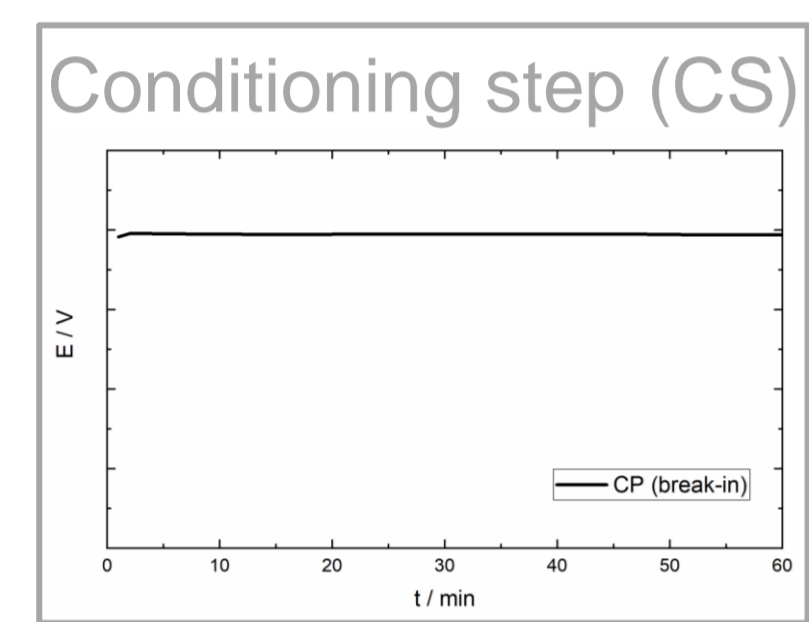
MEA specifications:

Anode – 2 mg cm⁻² Ir:Ru in ratios of 6:1, 3:1, 1:1
Cathode - 0.5 mg cm⁻² Pt/C
Membrane - N212



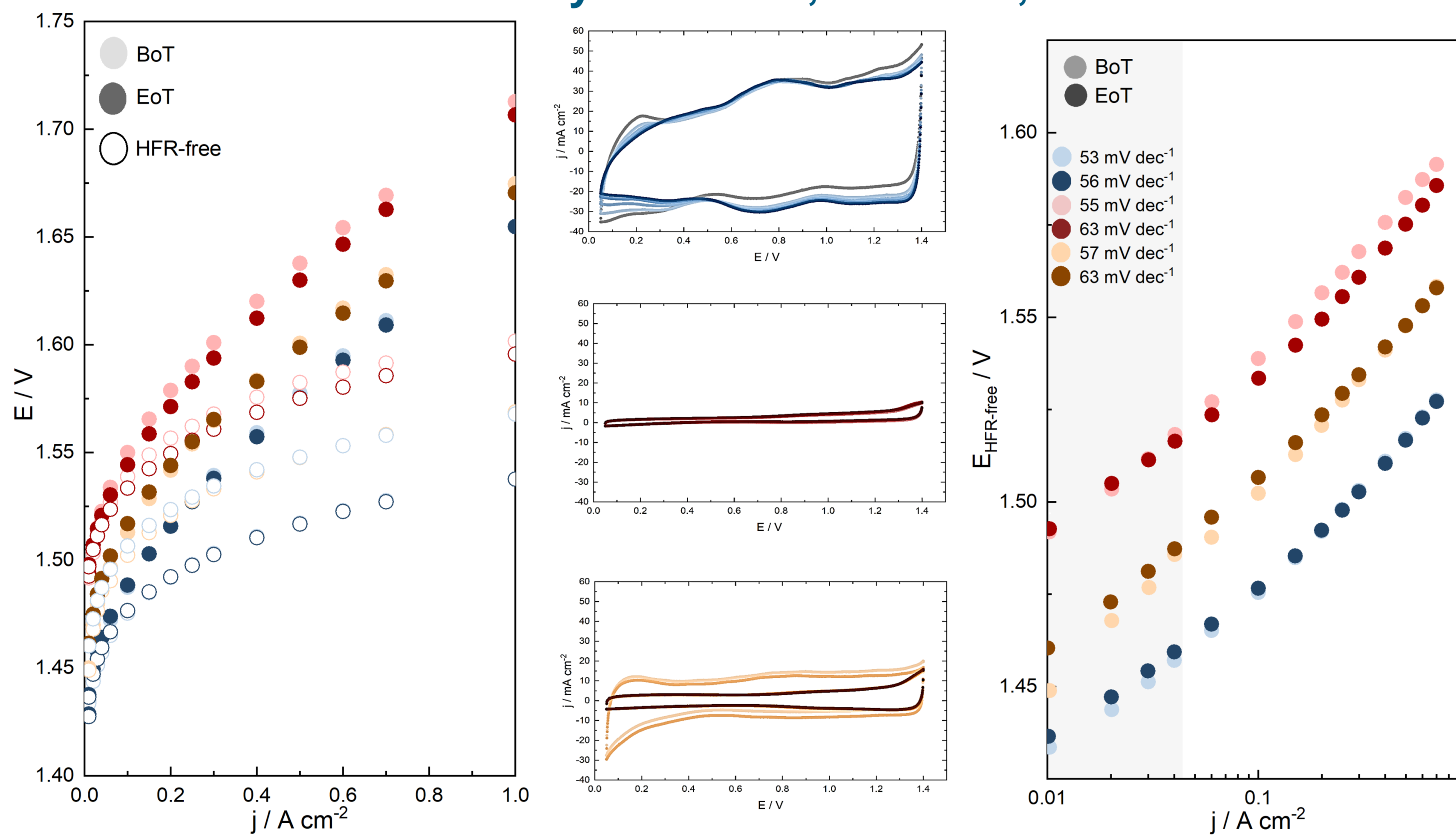
Operating conditions:
60°C, 1bar, Q_{H₂O} = 5 ml min⁻¹

AST Protocol



Cell Performance Evaluation
Cyclic voltammetry
Polarization curves
GEIS

Activity: Ir:Ru 6:1, Ir:Ru 3:1, Ir:Ru 1:1



• Reproducible and stable performance throughout the applied protocol

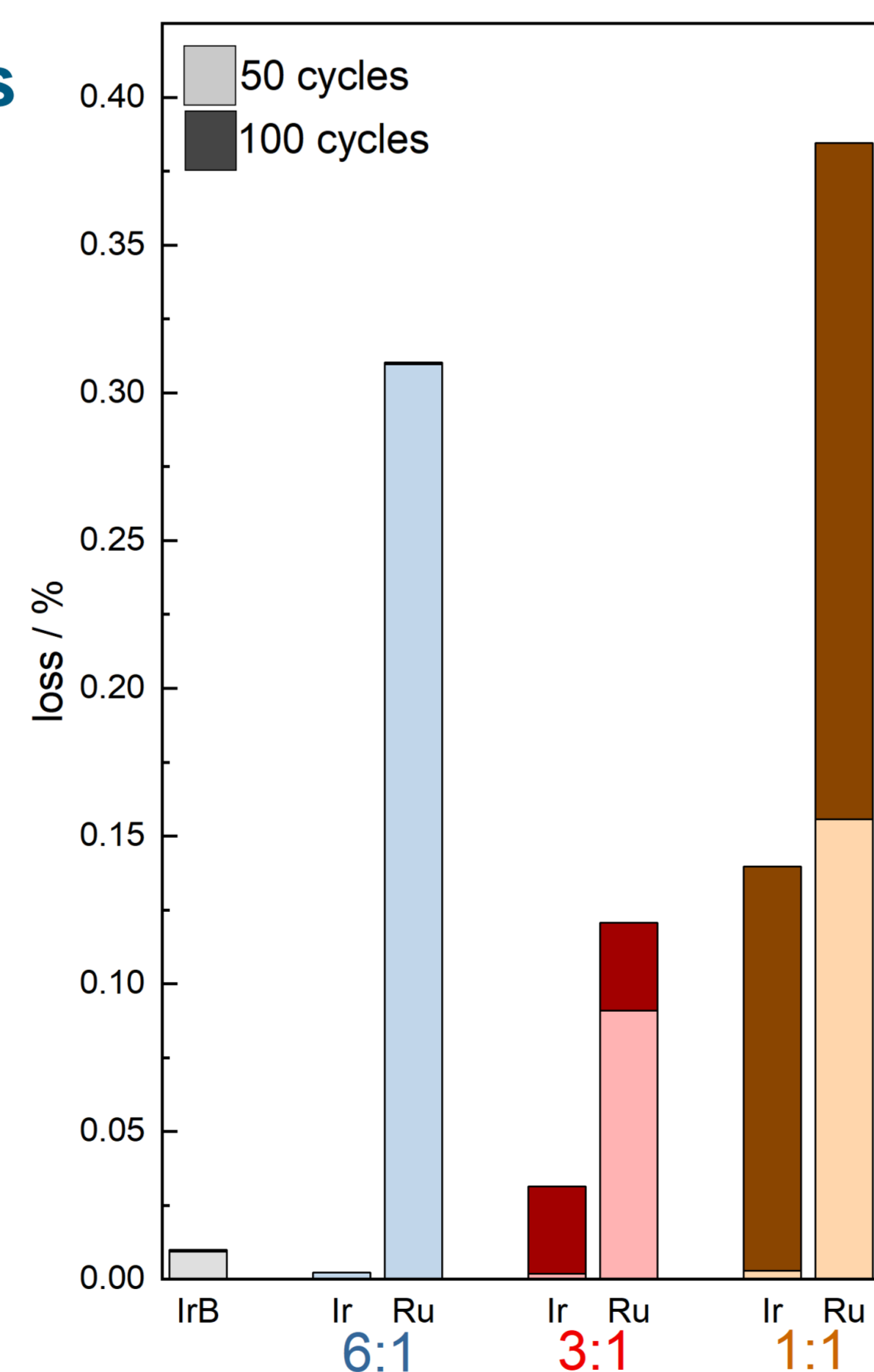
• **Activity:**
Ir:Ru 6:1 > Ir:Ru 1:1 > Ir:Ru 3:1

• Changes in 1:1 CVs: Possibility of Ru dissolution and redeposition

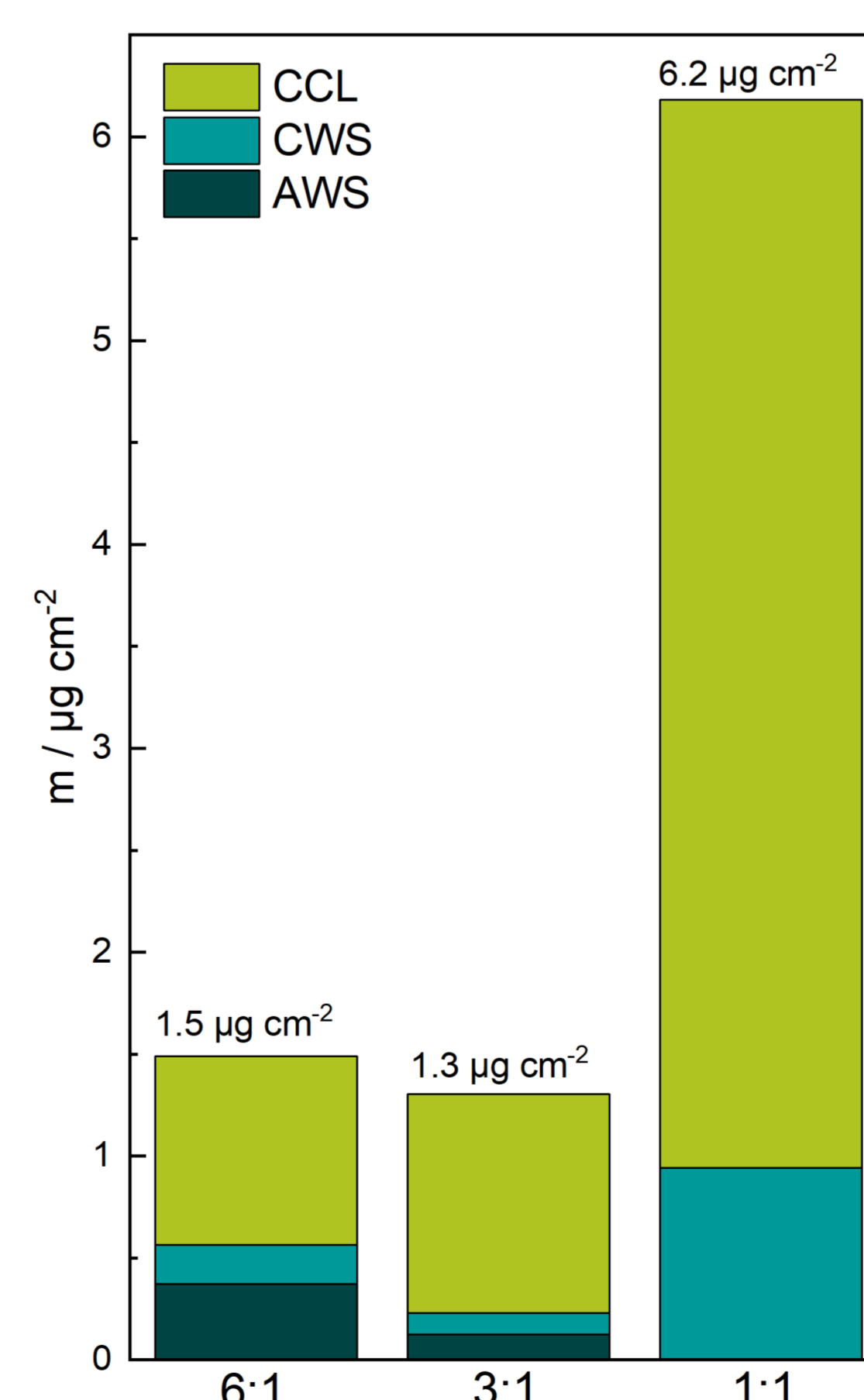
→ additional physical characterization is necessary

Comparison 50 cycles – 100 cycles

- Ru dissolves quicker than Ir
- Comparison to Ir_B: adding Ru stabilizes Ir in the first 50 cycles
- **Dissolution stability**
Ir:Ru 3:1 > Ir:Ru 6:1 > Ir:Ru 1:1



Dissolution Stability



Mass Balance

- In agreement with the previous study: most of the dissolved **anode catalyst redeposits on the cathode** catalyst layer
- Cathode water: dissolution only after CS
- Anode water: Most Ru dissolves during CS and redeposits afterward

→ Additional physical characterization is necessary

→ TEM measurements for quantification of membrane

References:

- [1] M. Carmo, D. L. Fritz, J. Mergel, and D. Stolten, International Journal of Hydrogen Energy, 2013, 38, 4901–4934
- [2] S. Cherevko, S. Geiger, O. Kasian, N. Kulyk, J. Grote, A. Savan, B. R. Shrestha, S. Merzlikin, B. Breitbach, A. Ludwig and K. J.J. Mayrhofer, Catalysis Today, 2016, 262, 170–180
- [3] M. Milosevic, T. Böhm, A. Körner, M. Bierling, L. Winkelmann, K. Ehelebe, A. Hutzler, M. Suermann, S. Thiele and S. Cherevko, ACS Energy Letters, 2023, 8, 2682–2688

Acknowledgments:



Ref. Ares(2023)4053441 - 12/06/2023